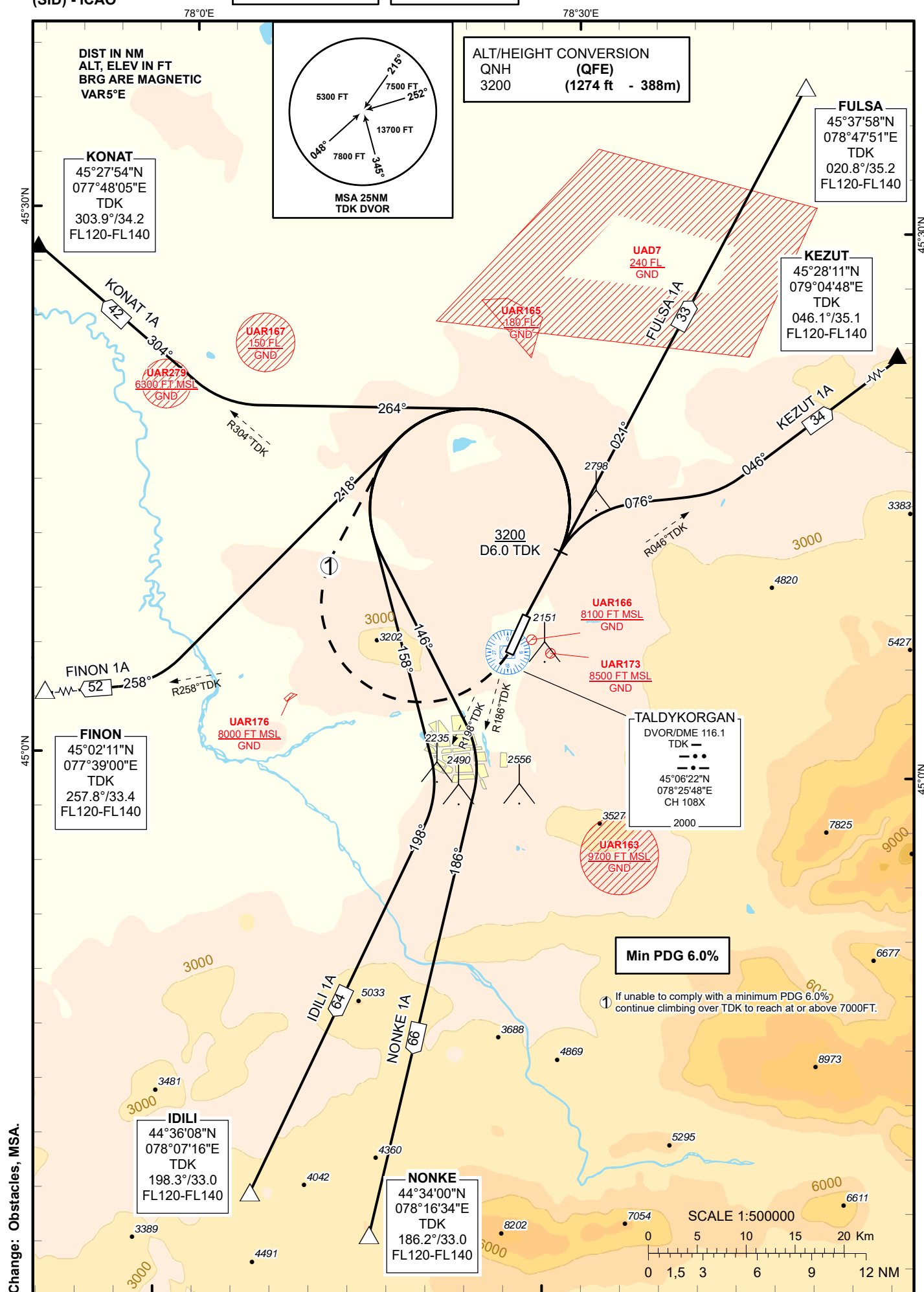


TALDYKORGAN
RWY 02



STANDARD DEPARTURE ROUTES – INSTRUMENT (SID) TALDYKORGAN RWY 02

FULSA 1A

After take-off climb on track 021° to 3200 or above, then proceed with track 021° to FULSA R 020.8° D 35.2NM with a minimum PDG of 6.0%.
If unable to comply with a minimum PDG of 6.0%, continue climbing over TDK to reach at or above 7000FT.
Cross FULSA at FL120-FL140.

KEZUT 1A

After take-off climb on track 021° to 3200 or above. At 6.0 NM TDK, turn RIGHT on track 076° until intercept R 046° TDK, then proceed with track 046° to KEZUT R 046.1° D 35.1NM with a minimum PDG of 6.0%.
If unable to comply with a minimum PDG of 6.0%, continue climbing over TDK to reach at or above 7000FT.
Cross KEZUT at FL120-FL140.

NONKE 1A

After take-off climb on track 021° to 3200 or above. At 6.0 NM TDK, turn LEFT on track 146° until intercept R 186° TDK, then proceed with track 186° to NONKE R 186.2° D 33.0NM with a minimum PDG of 6.0%.
If unable to comply with a minimum PDG of 6.0%, continue climbing over TDK to reach at or above 7000FT.
Cross NONKE at FL120-FL140.

IDILI 1A

After take-off climb on track 021° to 3200 or above. At 6.0 NM TDK, turn LEFT on track 158° until intercept R 198° TDK, then proceed with track 198° to IDILI R 198.3° D 33.0NM with a minimum PDG of 6.0%.
If unable to comply with a minimum PDG of 6.0%, continue climbing over TDK to reach at or above 7000FT.
Cross IDILI at FL120-FL140.

FINON 1A

After take-off climb on track 021° to 3200 or above. At 6.0 NM TDK, turn LEFT on track 218° until intercept R 258° TDK, then proceed with track 258° to FINON R 257.8° D 33.4NM with a minimum PDG of 6.0%.
If unable to comply with a minimum PDG of 6.0%, continue climbing over TDK to reach at or above 7000FT.
Cross FINON at FL120-FL140.

KONAT 1A

After take-off climb on track 021° to 3200 or above. At 6.0 NM TDK, turn LEFT on track 264° until intercept R 304° TDK, then proceed with track 304° to KONAT R 303.9° D 34.2NM with a minimum PDG of 6.0%.
If unable to comply with a minimum PDG of 6.0%, continue climbing over TDK to reach at or above 7000FT.
Cross KONAT at FL120-FL140.